

Key Stage 5 Participation, Progression and Attainment

2013/14

Highlights

- Raising of the Participation Age (RPA) to 17 came into effect in September 2013. Surrey has made great progress towards full participation. On 27th February 2014, of over 10,000 residents in Year 12 107 were known to be Not in Education, Employment and Training (NEET), less than half the number NEET at the same time last year. This reflects particularly well on the hard work of Surrey schools, the impact of the Leader's Ready for Work Programme and the wider work of Services for Young People.
- There is a 5-year trend of improvement in attainment by the age of 19 which remains above national averages at both Level 2 and Level 3. However, there was a slight decrease in performance at Level 3 in 2012.
- In 2013, Surrey's schools and colleges continued their above average performance for 'A' Level points per entry. Pass rates have decreased slightly since 2012, in line with the national picture. 'A' Level results in Surrey remain some distance from our highest performing statistical neighbours.
- The number of young people aged 16-18 starting apprenticeships since 2011 has increased by 4%. This is in contrast to an overall decrease of 14% in England during the same period.
- There is evidence to suggest that some high-achieving young people attending key stage 4 in Surrey's maintained schools and academies choose to follow A Level programmes at independent schools.
- Surrey's success rates for vocational courses below Level 3 (A level or equivalent) are improving and are now above national averages. This includes both Apprenticeships and programmes followed in schools & colleges. There is noticeable variation in success between subject areas.
- Early indications from DfE progression data suggest that progression from Surrey's schools to Higher Education may not be as strong as might be expected given schools' above average results. This may suggest that patterns of progression to Higher Education should be investigated further.
- There is a substantial gap in achievement by 19 between pupils claiming Free School Meals and other pupils, higher than the national average. At Level 3 this gap has remained at a similar level over the past 5 years. The gap at Level 2 improved to narrower than the regional average in 2012.

Contact:

Rob Atkins, Performance and Intelligence Manager (Services for Young People)

Tel: 0208 2132807

rob.atkins@surreycc.gov.uk

1. Participation

The Raising of the Participation Age to 17 came into effect in September 2013, requiring all young people to continue in education or training for one additional year. In September 2014 this will increase again, requiring all young people to remain in education or training until at least their 18th birthday¹.

7 Whilst it is the young person's duty to participate in education or training, it is the Local Authority's responsibility² to:

- Ensure that sufficient education and training provision is available;
- Promote the requirement to participate in education or training to young people;

and

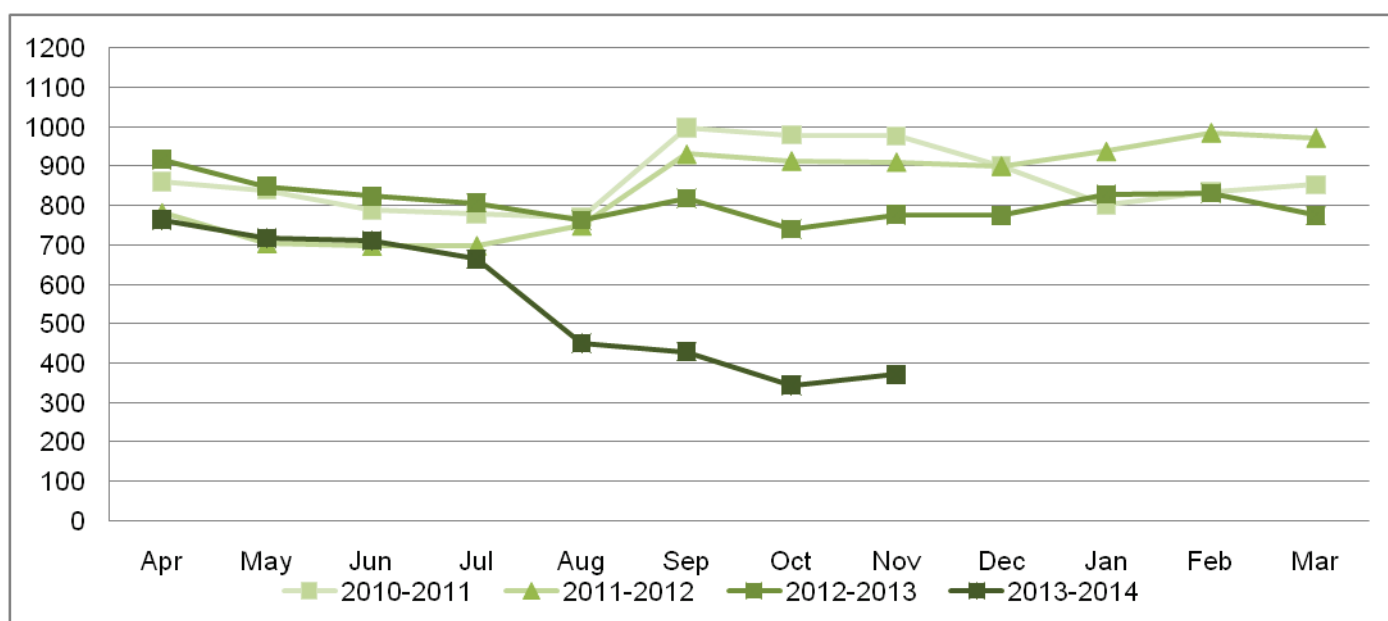
- Identify those young people who are not participating in education, employment or training.

A substantial programme of work has supported these goals in Surrey including the Leader's Ready for Work programme. This programme has so far engaged over 400 young people in school years 12 to 14 or aged 16-19 who would otherwise be NEET.

The Youth Support Service's Tracking and Engagement Team has been particularly successful in identifying young peoples' current activities. On 5th December 2013, 414 young people in Year 12 had an unknown activity, compared to 1,669 at the same point in 2012.

The overall number of young people NEET has reduced by more than half between November 2012 and November 2013.

Chart 1 – Number of young people aged 16-18 who are NEET in Surrey, 2010/11 – 2013/14



Source: Local CCIS (Adapt), November 2013

¹ - Raising the participation age (RPA)

<http://www.education.gov.uk/childrenandyoungpeople/youngpeople/participation/rpa>

² - Participation of Young People – Statutory Guidance

<http://media.education.gov.uk/assets/files/pdf/p/participation%20of%20young%20people%20-%20statutory%20guidancev3.pdf>

Key Stage 5 - Participation, Progression and Attainment, 2013/14

Proportions of Surrey-resident young people accessing education, employment and training have remained broadly stable over the past 2 years. The most recent available data (December 2013) shows the highest recorded proportion of young people in education (87.8%). The most recent reporting period also shows the highest recorded levels of participation in non-employment based training (2.7%). This is in large part due to enrolment on engagement programmes now formally classified as training by the Department for Education, including the Leader's Ready for Work programme.

Table 1.2 – Y12-Y14 participation by EET category, March 2012 – December 2013

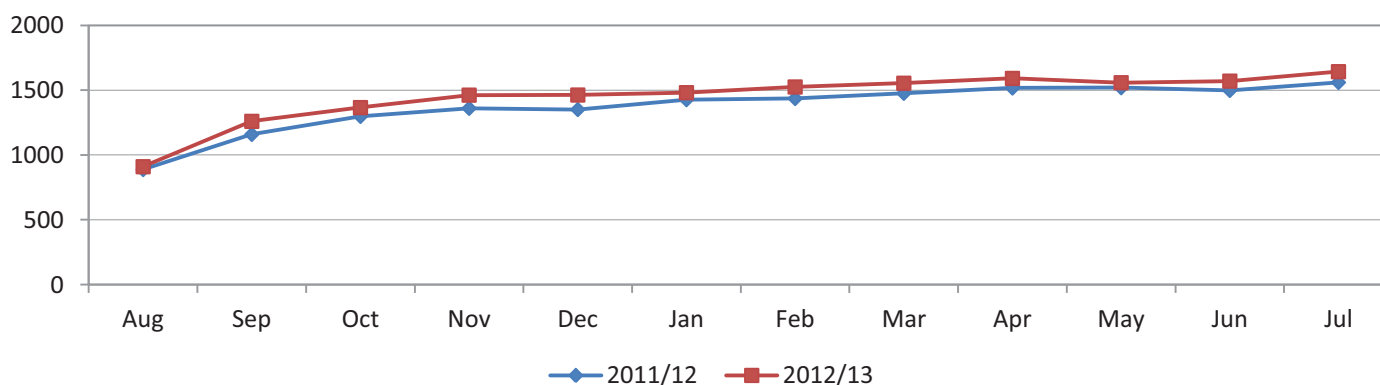
EET Status	Month					
	Mar-12	Jun-12	Dec-12	Mar-13	Jun-13	Dec-13
Education	84.3%	84.4%	87.5%	83.8%	81.8%	87.8%
Training (not in employment)	1.0%	0.9%	0.8%	0.9%	1.2%	2.7%
Employment with training	5.9%	6.6%	5.3%	8.4%	9.0%	4.5%
Employment without training	4.3%	4.1%	2.7%	3.2%	4.6%	3.2%
Overall EET	95.5%	96.0%	96.3%	96.3%	96.6%	98.2%

According to the most recent confirmed data (31st January 2014), every young person looked after by Surrey County Council and placed within Surrey is known to be in education, employment or training. 17% of young people looked after by Surrey County Council and placed outside of Surrey are known to be NEET. No young people who were looked after have had a status of unknown for 20 months.

As at the 31st January 2014, 95.1% of young people in Year 12 who were identified by schools and by Services for Young People as at risk of becoming NEET (RONI) were engaged in Education, Employment or Training.

In contrast to the national decline in 16-18 Apprenticeship participation³, Surrey achieved a year-on-year increase in the participation of young people aged 16-18 in Apprenticeship schemes every month in the 2012/13 reporting year. In July 2013, 1,643 Surrey-resident 16-18 year-olds were participating in registered Apprenticeships. This means that the number of young people aged 16-18 starting apprenticeships since 2011 has increased by 4%. This is in contrast to an overall decrease of 14% in England during the same period.

Chart 1.3 – Apprenticeship participation 2011/12 and 2012/13



Source: National Apprenticeship Service

³ – Data Service Statistical First Release - http://www.thedataservice.org.uk/NR/rdonlyres/79DF7C3D-C5D3-4816-897D-BEDA6BAFFD70/0/SFR_commentary_November_2013.pdf

2. Achievement and Attainment

The number of young people from Surrey schools attaining Level 3 (A Level equivalent) or higher by the age of 19 is above the England average⁴. There is 5-year trend of improvement, broadly in line with the national trend. Performance is broadly average among statistical neighbours and above the South East regional average. Surrey's performance decreased slightly (by 0.5%) in 2012.

The gap in attainment of Level 3 by the age of 19 between Free School Meal claimants and other pupils, (32%) is wider than the national average but roughly average among statistical neighbours and other Local Authorities in the South East.

Surrey's performance in ensuring that young people achieve Level 2 by the age of 19 has improved steadily year-on-year over the most recent five years reported. After four years in which the FSM attainment gap for this measure did not improve, 2012 saw Surrey improve to a gap of 20 percentage points, one point better than the regional average.

Chart 3.1 - % Young People attaining Level 3 by 19

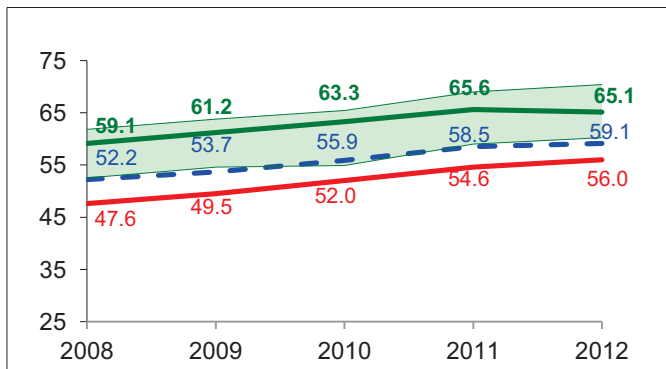
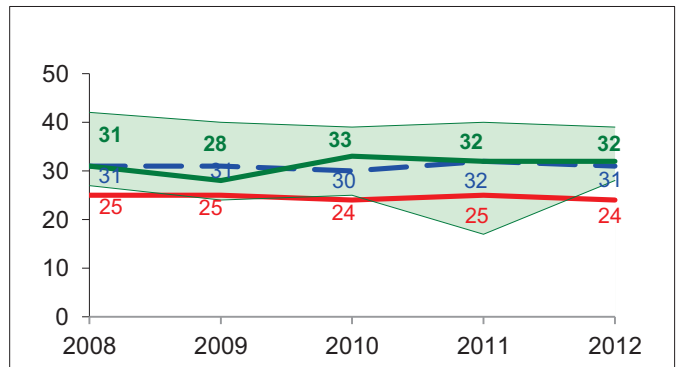
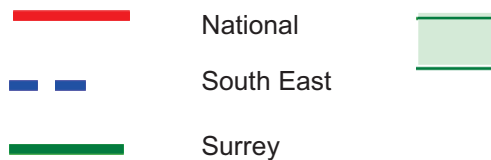


Chart 3.2 – Level 3 Free School Meal attainment gap
(gap indicator: lower numbers show better performance)



Source: DfE SFR 'Attainment by 19, 2012'



Minimum and maximum statistical neighbours (Bucks, Bracknell Forest, Cheshire East, Cambs, Hampshire, Herts, Oxon, Windsor & Maidenhead, West Berkshire and Wokingham). Note that these may not be the same from year to year.

Chart 3.3 - % Young People attaining Level 2 by 19

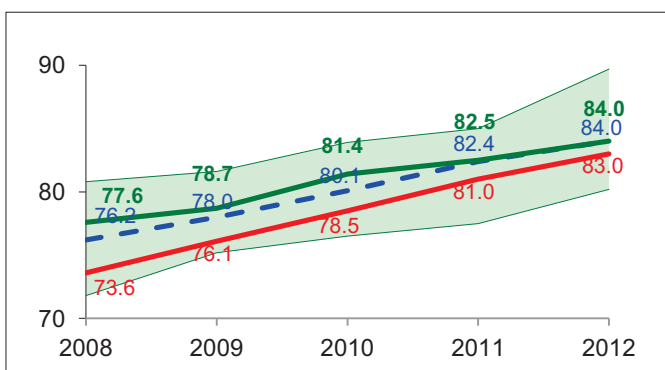
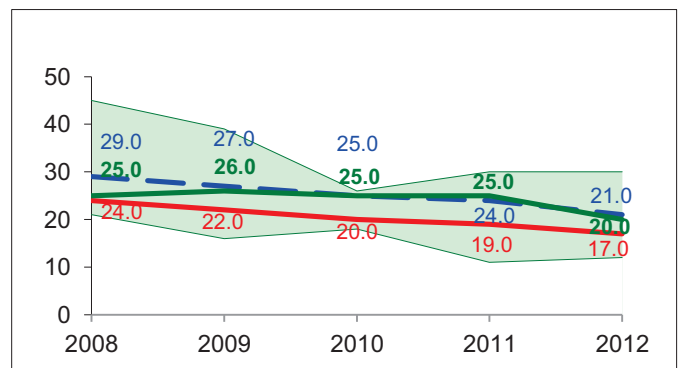


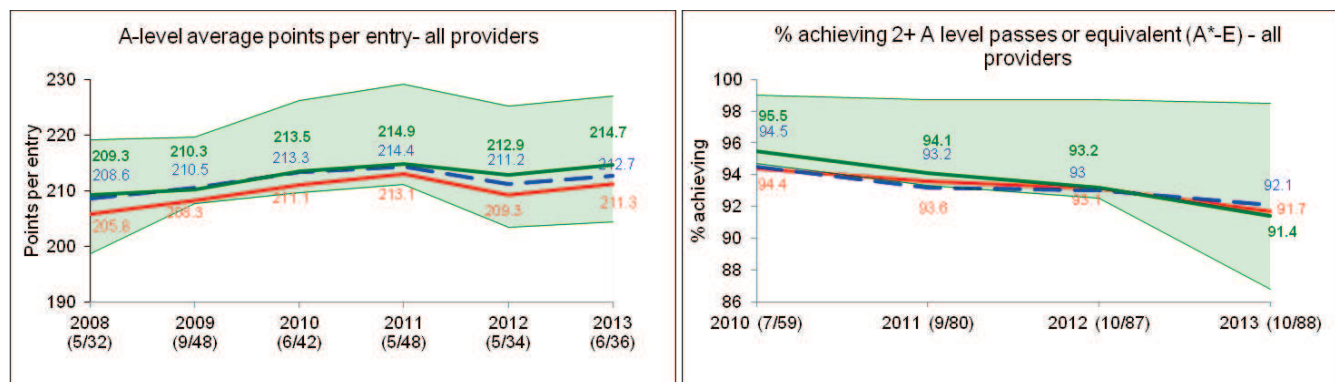
Chart 3.4 – Level 2 Free School Meal attainment gap
(gap indicator: lower numbers show better performance)



A Level and equivalent results for young people in Surrey's schools and colleges remain slightly above national averages but below most statistical neighbours. Average points per entry have increased since 2012; points per student and pass rates have both decreased slightly which is in line with the national trend.

Charts 2.1 and 2.2 – 'A' Level (and equivalent) results in Surrey, 2013

Note: numbers in brackets show Surrey's ranking (statistical neighbour ranking/national ranking)



— National
— South East
— Surrey
 Minimum and maximum statistical neighbours (Bucks, Bracknell Forest, Cheshire East, Cambs, Hampshire, Herts, Oxon, Windsor & Maidenhead, West Berkshire and Wokingham). Note that these may not be the same from year to year.

Source: DfE School Performance Tables and Statistical First Release, January 2014

'A' level performance headline statistics do not include the performance of pupils attending independent schools. DfE Attainment by 19 data suggests that some high-achieving young people in Surrey schools at key stage 4 leave the maintained sector to complete their A Level education in the independent sector. This requires further investigation.

Evidence from a range of value-added measures suggests that, on average, young people attending Surrey's school 6th forms and colleges make at least the progress they would be expected to make during Key Stage 5. Across all provision in Surrey the DfE KS5 value-added measure⁵ shows that most qualifications have average or better Value-Added. Reports provided by ALPS⁶ show that 7 school sixth forms provided significantly better than average value-added in 2013.

The most recent data provided by the Education Funding Agency and the National Apprenticeship Service suggests that success rates for young people studying at below Level 3 (A Level and equivalent) have improved and are now above national averages:

- Success rates for programmes below Level 3 studied at Surrey's schools, colleges and training providers improved from 74.7% to 82.7% between 2009 and 2011.
- Success rates for Surrey resident 16-18 year-olds participating in Intermediate (Level 2) Apprenticeships improved from 67.3% to 74.6% between 2009 and 2011.

⁴ - <https://www.gov.uk/government/publications/attainment-by-young-people-in-england-measured-using-matched-administrative-data-by-age-19-in-2012>

⁵ - Destinations of KS4 and KS5 pupils, 2010/2011

<https://www.gov.uk/government/publications/attainment-by-young-people-in-england-measured-using-matched-administrative-data-by-age-19-in-2012>

⁶ - ALPS: 'A Level Performance System'

3. Progression

In 2013, the Department for Education published experimental data on progression for young people completing Key Stage 5. This data relates to young people leaving Surrey's schools and colleges in 2010, and should be treated with caution due to the experimental nature of the statistics. However, this data does indicate that fewer young people than expected from Surrey's schools may be successfully making the transition to Higher Education. 44% of learners completing Key Stage 5 progressed to a 'sustained Higher Education destination', compared to 48% of young people from Surrey's statistical neighbours and from England overall⁶.

⁷ - Destinations of KS4 and KS5 pupils, 2010/2011

<https://www.gov.uk/government/publications/destinations-of-key-stage-4-and-key-stage-5-pupils-2010-to-2011>

4. Conclusions

Surrey has made strong progress towards achieving full participation in education and training for young people. 98.2% of young people in school years 12-14 are currently participating in some form of education, employment or training. The number of young people for whom activity is not known has also greatly reduced.

'A' Level results are above national averages but some distance from our statistical neighbours. Pass rates in vocational subjects have improved, for both taught courses and apprenticeships. There is, however, variation between subjects. There is some evidence to suggest that A Level and Attainment by 19 measures may be affected by young people choosing to study A Levels in independent school 6th forms. Experimental DfE progression data suggests that progression to Higher Education may not be as strong as expected given Surrey's relatively high performance at A Level. This should be investigated further.

Surrey continues to perform strongly against 'Attainment by 19' measures, however the attainment gap between Free School Meal claimants and other pupils at Level 3 is wider than most comparators and has not reduced over the past 5 years. The attainment gap at Level 2 has narrowed and is now less than the South East average.

5. Further Reading

Surrey's Young Peoples Employability Plan

http://www.surreycc.gov.uk/data/assets/pdf_file/0006/395655/Employability-plan-summary-FINAL.pdf

Key Stage 5/16-18 Performance Tables

<http://www.education.gov.uk/schools/performance/>

Key Stage 5 Destinations

<http://www.education.gov.uk/a00208218/key-stage-4-and-key-stage-5-destination-measures/>

RPA Statutory Guidance

<http://www.education.gov.uk/childrenandyoungpeople/youngpeople/participation/rpa>

Attainment by 19 Statistics

<https://www.gov.uk/government/collections/statistics-attainment-at-19-years>